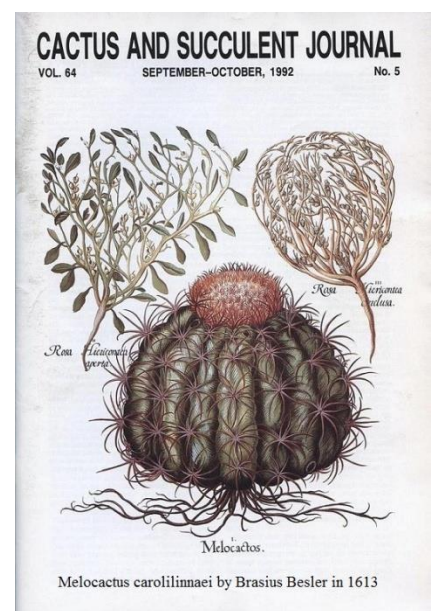
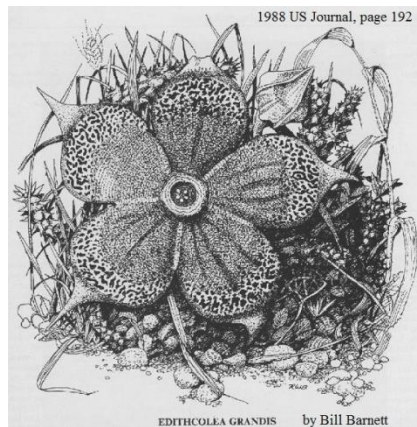
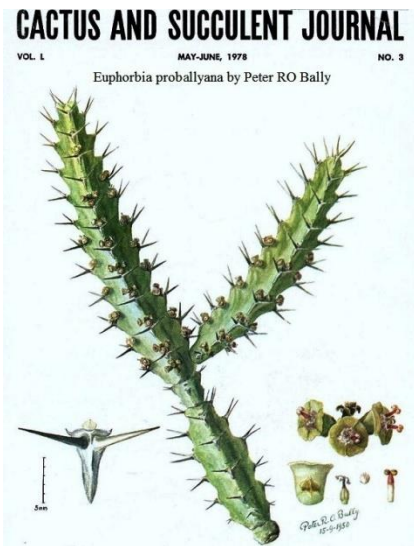
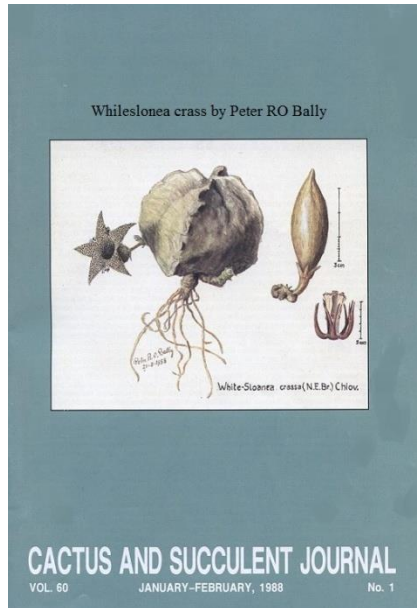


# US Journal Art Works by various Artists - 1

"Copyrighted material on this site is used in accordance with 'Fair Use', for the purpose of providing dedicated cactus and other succulent plant personalities, and will be removed at the request of copyright owner(s). As a non-profit, non-revenue producing site, the CSSA Archives provides its content as a free, educational and informative service for its readers. Copywritten content on this site may not be further used for profitable purposes without the expressed written permission and consent of the copyright owner(s)."





CEREUS GRANDIFLORUS  
"THE QUEEN OF THE NIGHT."

THE QUEEN OF NIGHT.

c1891 woodcut by Albert Blanc



CACTUS AND SUCCULENT JOURNAL

VOL. 57 MAY-JUNE, 1985 NO. 3

Euphorbia cylindrica by Elise Bodley



CACTUS AND SUCCULENT JOURNAL

VOL. 58 MAY-JUNE, 1986 NO. 3

Tylecodon hallii by Elise Bodley



1991 US Journal, page 196.

Fig. 1. *Trachyandra torilis* (Bak.) Oberm., a water color illustration by Elize Bodley.



1992 US Journal, page 58.

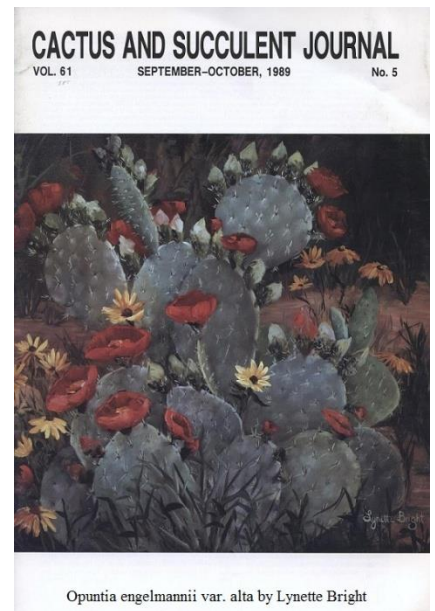
Fig. 1. *Tylecodon bodleyi*, a watercolor illustration by Elize Bodley drawn from live plants collected by Lavranos and Bleck, Gembokvlei.



CACTUS AND SUCCULENT JOURNAL

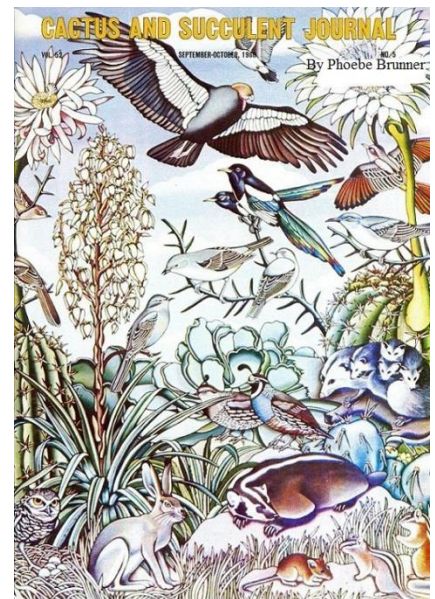
VOL. 54 MARCH-APRIL, 1982 NO. 2

Euphorbia splendens by Pierre Boiteau

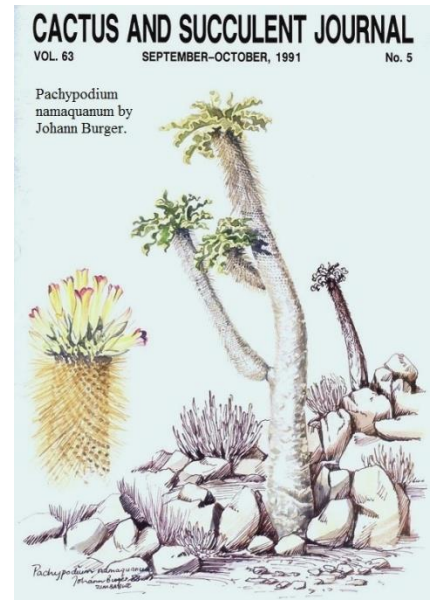


CACTUS AND SUCCULENT JOURNAL  
VOL. 61 SEPTEMBER-OCTOBER, 1989 No. 5

Opuntia engelmannii var. alta by Lynette Bright



CACTUS AND SUCCULENT JOURNAL  
VOL. 63 SEPTEMBER-OCTOBER, 1991 No. 5  
By Phoebe Brunner



CACTUS AND SUCCULENT JOURNAL  
VOL. 63 SEPTEMBER-OCTOBER, 1991 No. 5

Pachypodium namaquanum by Johann Burger.

Pachypodium namaquanum by Johann Burger.

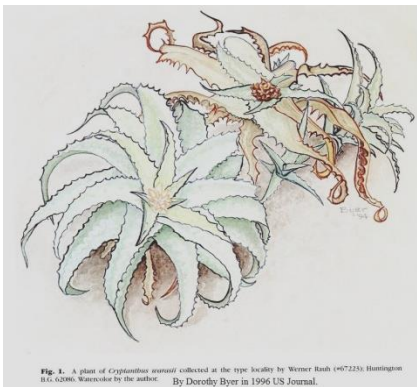


Fig. 1. A plant of *Cryptanthus werneri* collected at the type locality by Werner Raab (#6722); Huntington B.G. 0296; *Werneri* by the author. By Dorothy Byer in 1996 US Journal.



**CACTUS AND SUCCULENT JOURNAL**  
VOL. 59 MARCH-APRIL, 1987 No. 2  
*Aloe vigneri* by Gillian Condy



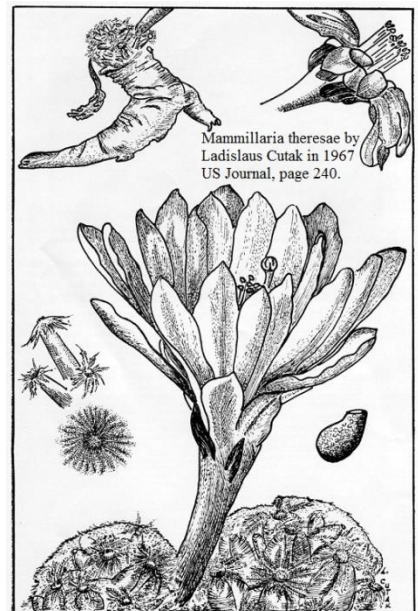
**CACTUS AND SUCCULENT JOURNAL**  
VOL. 56 MAY-JUNE, 1984 NO. 3  
*Aloe ciliaris* by Kathleen S Crawford



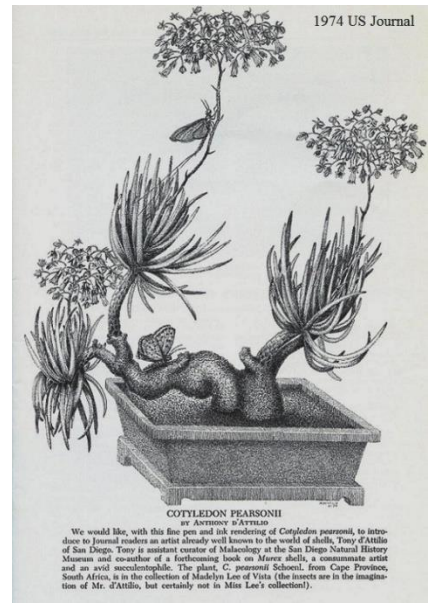
**CACTUS AND SUCCULENT JOURNAL**  
VOL. 56 JULY-AUGUST, 1984 NO. 4  
*Pereskia tampicana* by Kathleen S Crawford



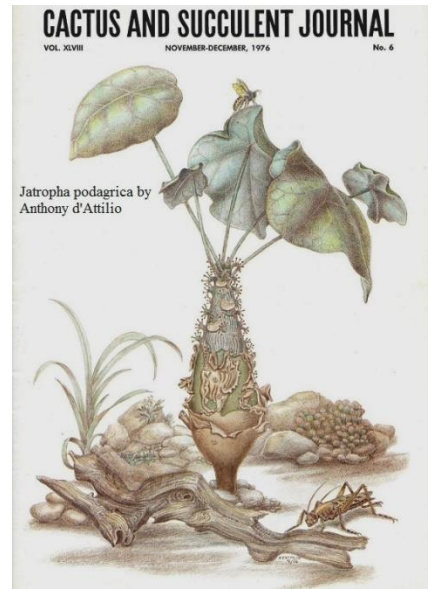
**CACTUS AND SUCCULENT JOURNAL**  
VOL. 59 JANUARY-FEBRUARY, 1987 No. 1  
*Echeveria gibbiflora* XE *gigantea* by Kathleen S Crawford



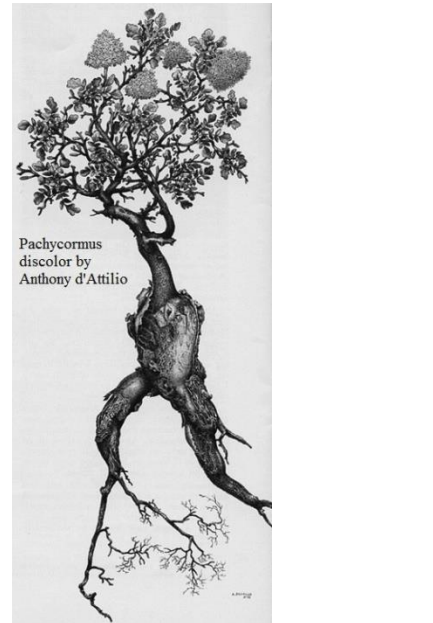
*Mammillaria theresae* by Ladislav Cutak in 1967 US Journal, page 240.



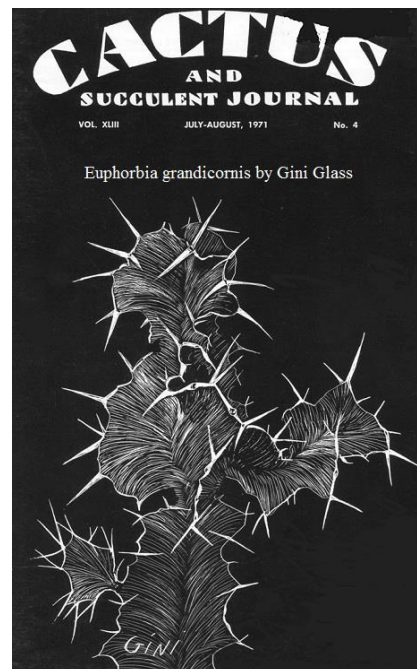
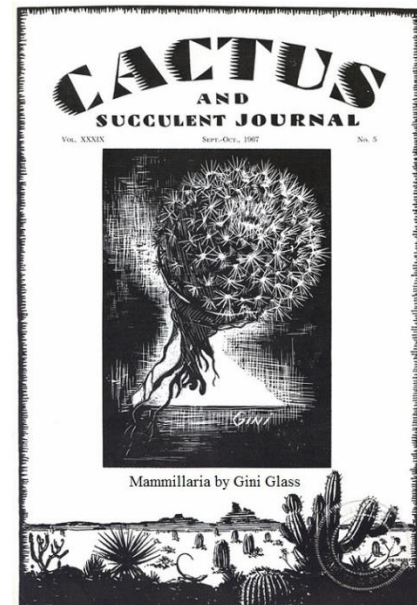
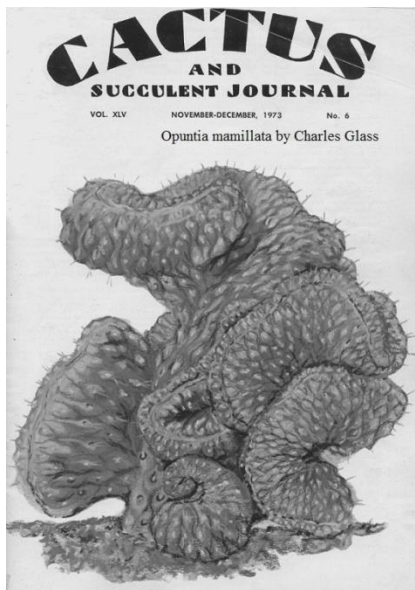
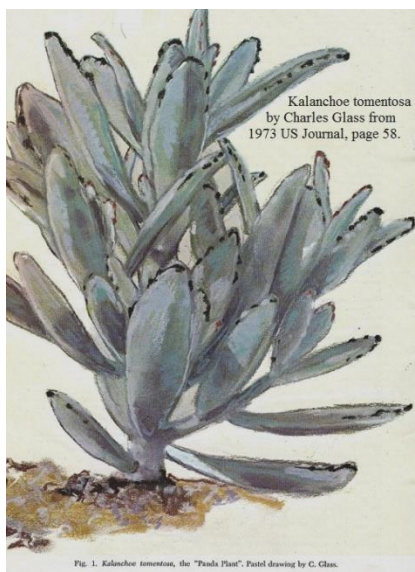
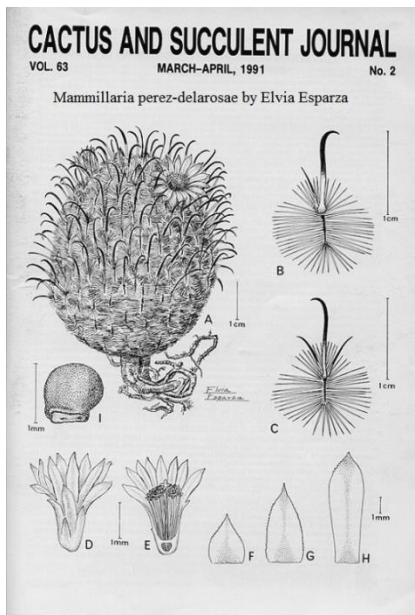
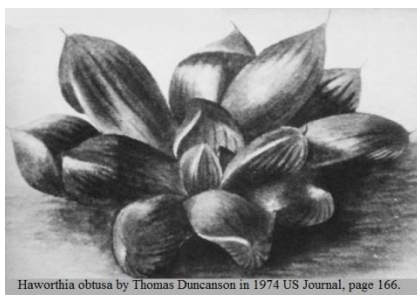
**CACTUS AND SUCCULENT JOURNAL**  
VOL. XXVIII NOVEMBER-DECEMBER, 1976 No. 6  
*COTYLEDON PEARSONII* by ANTHONY D'ATTILIO  
We would like, with this fine pen and ink rendering of *Cotyledon pearsonii*, to introduce to Journal readers an artist already well known to the world of shells, Tony d'Attilio of San Diego. Tony is assistant curator of Malacology at the San Diego Natural History Museum and co-author of a forthcoming book on *Murex* shells, a consummate artist and an avid succulentophile. The plant, *C. pearsonii* Schott., from Cape Province, South Africa, is in the collection of Madelyn Lee de Vries (the insects are in the imagination of Mr. d'Attilio, but certainly not in Miss Lee's collection!).

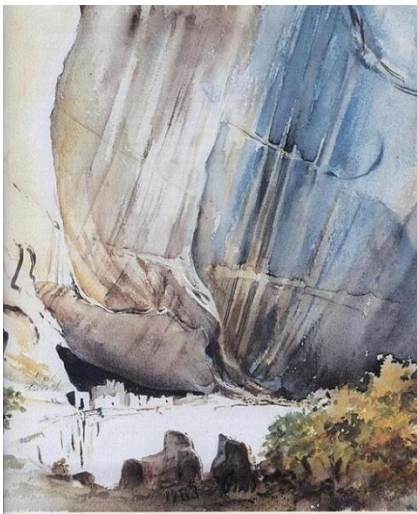


**CACTUS AND SUCCULENT JOURNAL**  
VOL. XXVIII NOVEMBER-DECEMBER, 1976 No. 6  
*Jatropha podagrica* by Anthony d'Attilio

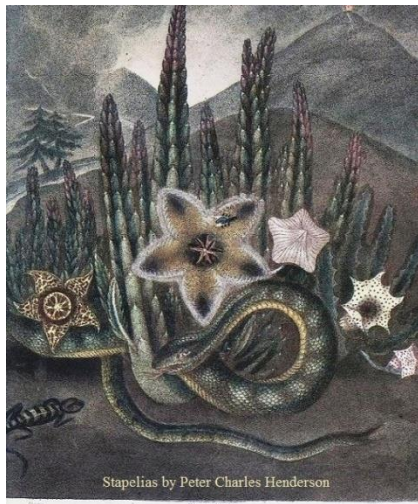


*Pachycormus discolor* by Anthony d'Attilio



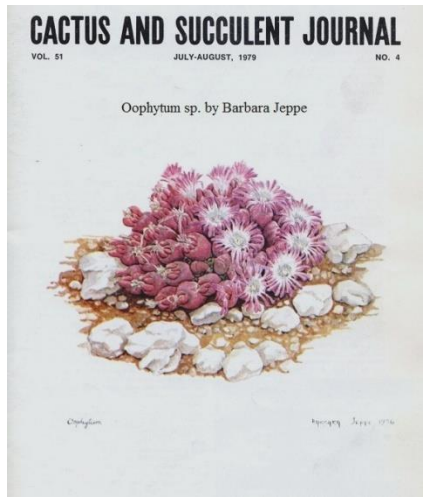


**CACTUS AND SUCCULENT JOURNAL**  
 VOL. 59 SEPTEMBER-OCTOBER, 1987 No. 5  
 Canyon de Chelly by Gini Glass



Stapelias by Peter Charles Henderson

**CACTUS AND SUCCULENT JOURNAL**  
 VOL. 54 SEPTEMBER-OCTOBER, 1982 NO. 5

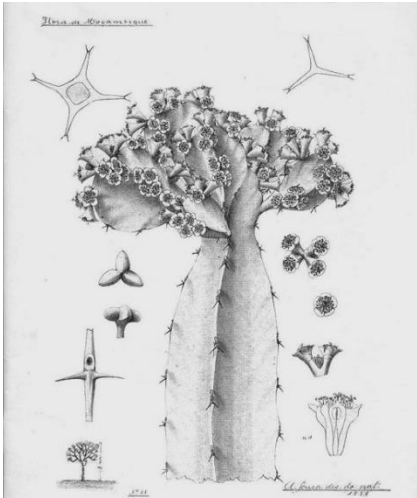


Oophytum sp. by Barbara Jeppe

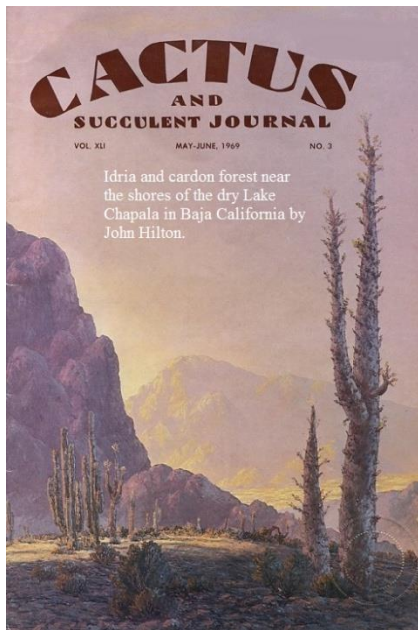


Argyroderma congregatum by Barbara Jeppe 1977

**CACTUS AND SUCCULENT JOURNAL**  
 VOL. 52 JANUARY-FEBRUARY, 1980 NO. 1  
 Argyroderma congregatum by Barbara Jeppe



**CACTUS AND SUCCULENT JOURNAL**  
 VOL. 53 SEPTEMBER-OCTOBER 1981 NO. 5  
 Euphorbia sp. by Antonia de Figueiredo Gomes e Sousa



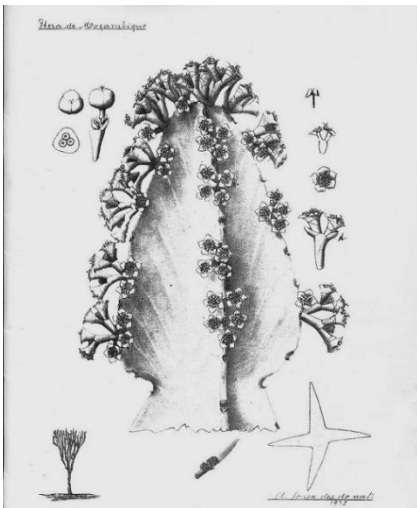
**CACTUS AND SUCCULENT JOURNAL**

VOL. XLII MAY-JUNE, 1969 NO. 3

Idria and cardon forest near the shores of the dry Lake Chapala in Baja California by John Hilton.

**CACTUS AND SUCCULENT JOURNAL**  
 VOL. 52 JULY-AUGUST, 1980 NO. 4

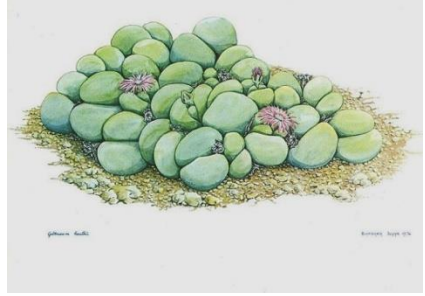
Gibbaeum heathii by Barbara Jeppe



**CACTUS AND SUCCULENT JOURNAL**  
 VOL. 53 NOVEMBER-DECEMBER 1981 NO. 6  
 Euphorbia sp. by Antonio de Figueiredo Gomes e Sousa



Euphorbia obesa by Barbara Jeppe



Gibbaeum heathii